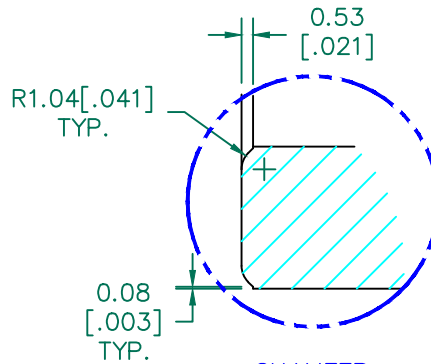


SEE DETAIL "A"

SECTION A-A



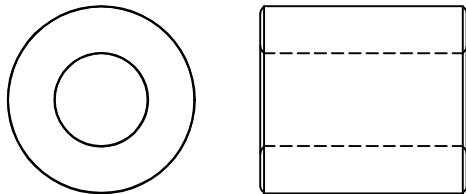
CHAMFER
DETAIL A
SCALE" 3:1

RoHS

NOTES: UNLESS OTHERWISE SPECIFIED

1. COSMETIC SPECIFICATION REFER TO WI-QA-038.

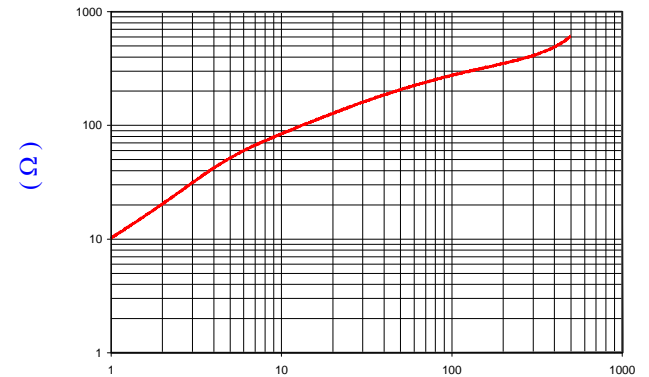
SCALE DRAWING 1:1



28B1020-100

IMPEDANCE (Z)			
Frequency	25 MHz	100 MHz	300 MHz
Nominal (REF)	147 Ω	276 Ω	412 Ω
Minimum	- Ω	220 Ω	- Ω

Z vs. FREQUENCY
(REF. ONLY)



FREQUENCY (MHz)

AGILENT E4991A Impedance/Material Analyzer
HP 16092A-Test Fixture

FERRITE CORE DIMENSIONS (SPEC): mm [in]

A	25.91 [1.020]	±	0.46 [.018]
B	12.83 [.505]	±	0.25 [.010]
C	28.58 [1.125]	±	0.76 [.030]

WEIGHT/1000 56.01 kgs [123.49 Lbs]

DIMENSIONS ARE IN mm [INCHES].

This print is the property of Laird Tech. and is loaned in confidence subject to return upon request and with the understanding that no copies shall be made without the written consent of Laird Tech. All rights to design or invention are reserved.



G	UPDATE THE LOGO	05/13/15	QIU	PROJECT/PART NUMBER: 28B1020-100		REV G	PART TYPE: FERRITE CORE	DRAWN BY: DJB
F	UPDATE COMPANY LOGO & DETAIL A CALLOUT	4/15/09	JRK	DATE: 07/03/90	SCALE: 1.5 : 1	MATERIAL: FERRITE		
E	UPDATE FORMAT & Z SPECS, ADD CURVE REM COATING SPECS, CHG P/N FROM 10*	07/22/03	JRK	CAD # 28B1020-100-G	TOOL # B1020			
REV	DESCRIPTION	DATE	INT					

Mouser Electronics

Authorized Distributor

Click to View Pricing, Inventory, Delivery & Lifecycle Information:

[Laird Performance Materials:](#)

[28B1020-100](#)