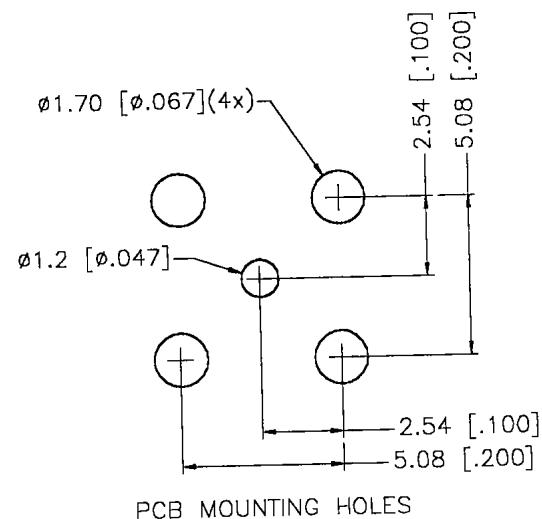
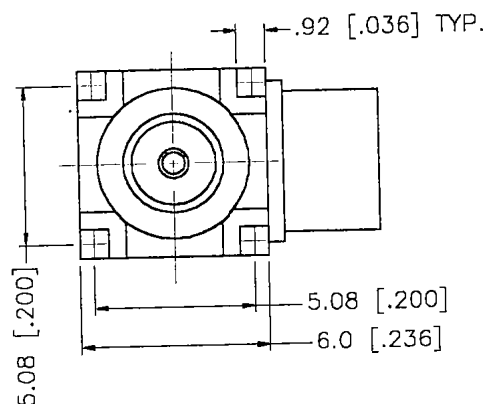
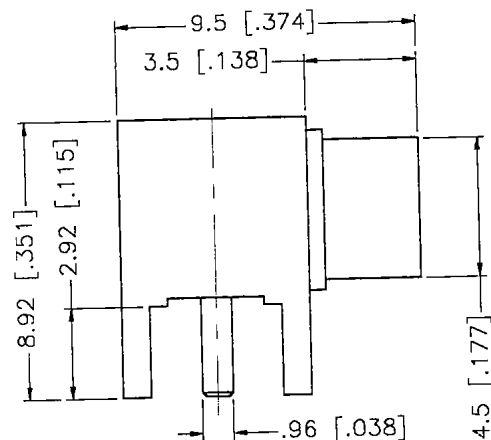



REV.	DATE	DESCRIPTION
NC	02/12/98	INITIAL RELEASE



DESCRIPTION			MATERIAL	FINISH	UNLESS OTHERWISE SPECIFIED DIMENSIONS ARE IN MILLIMETERS DIMENSIONS IN [] ARE IN INCHES FOR CUSTOMER REFERENCE ONLY	APPROVALS		DATE				
1	2	3	4	5		DRAWN	G.R.S.	02/12/98				
1	BODY	BRASS	GOLD		UNLESS OTHERWISE SPECIFIED TOLERANCES FOR MILLIMETERS ARE: 0.5-6 = ± 0.2 6-30 = ± 0.4 30-120 = ± 0.6 120-315 = ± 1 315-1000 = ± 1.6 1000-2000 = ± 2.4	CHECKED			TITLE MCX R/A P.C. BOARD RECEPTACLE (2.92 LEGS - GOLD)			
2	INSULATOR	TEFLON	NATURAL			ISSUED			SIZE A FSCM NO. 99001 DWG. NO. 252141.DWG			
3	CONTACT PIN	BER. COPPER	GOLD						REV. NC			
4									SCALE NA PART NO. 252141 SHEET 1 OF 1			
5												
6												
7												
8												

Mouser Electronics

Authorized Distributor

Click to View Pricing, Inventory, Delivery & Lifecycle Information:

[Amphenol:](#)

[252141](#)