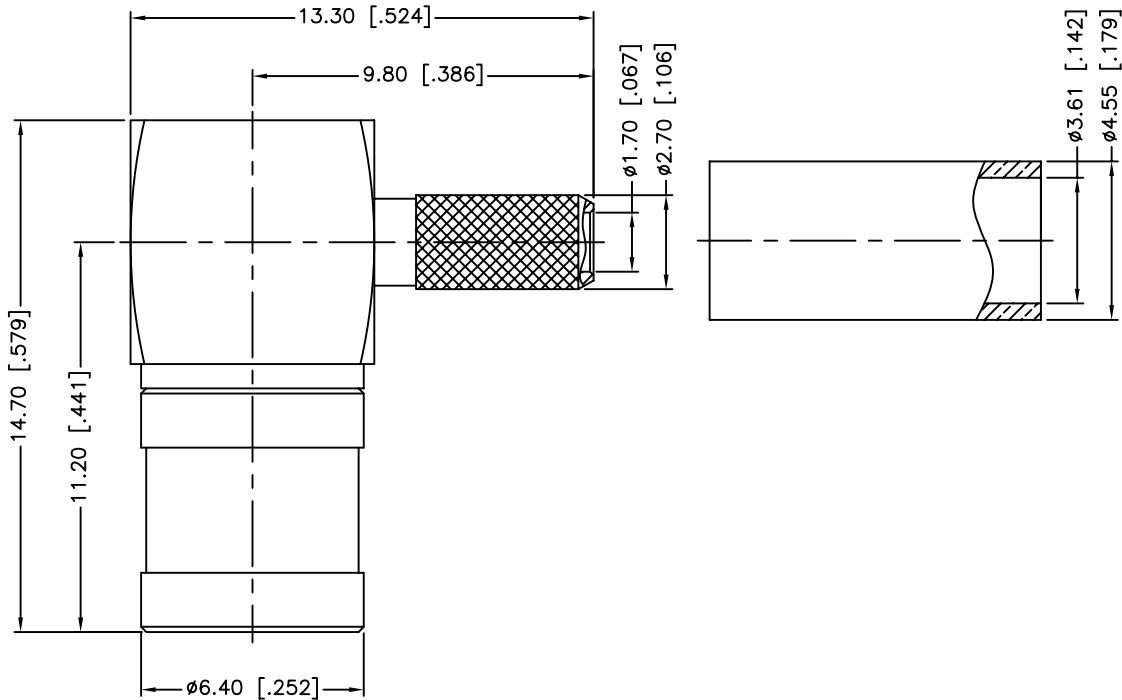
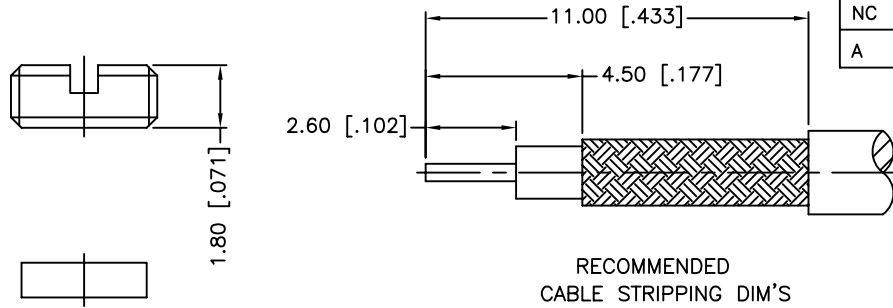


REV.	DATE	ECR NO.	DESCRIPTION
NC	08/01/05	XXXXXX	INITIAL RELEASE
A	12/17/10	2128	CHANGE TITLE BLOCK FROM "RG-316U/D" TO "RG-179BD"



1. CRIMPED FERRULE
HEX CRIMP SIZE .151"
2. CONTACT PIN TO SOLDER

10	HEAT SHRINK TUBING			1
9	FERRULE	COPPER	GOLD	1
8	COVER	BRASS	GOLD	1
7	INSULATOR	PE	NATURAL	1
6	RETAINER RING	BER. COPPER	NATURAL	1
5	CONTACT PIN	BER. COPPER	GOLD	1
4	INSULATOR	PTFE	NATURAL	1
3	BARREL	BRASS	GOLD	1
2	BODY	BRASS	GOLD	1
1	SHELL	BRASS	GOLD	1
	DESCRIPTION	MATERIAL	FINISH	QTY

<div>UNLESS OTHERWISE SPECIFIED DIMENSIONS ARE IN MILLIMETERS. DIMENSIONS IN [] ARE IN INCHES AND FOR CUSTOMER REFERENCE ONLY.</div> <div>UNLESS OTHERWISE SPECIFIED TOLERANCES FOR MILLIMETERS ARE: 0.5 – 8mm ± 0.20mm 8 – 30mm ± 0.40mm 30 – 120mm ± 0.50mm</div> <div>UNLESS OTHERWISE SPECIFIED TOLERANCES FOR INCHES ARE: .020 – .315 = ± 0.007" .315 – 1.180 = ± 0.015" 1.180 – 4.724 = ± 0.020"</div>	APPROVALS	DATE	<h1>Amphenol Connex</h1>							
	DRAWN	M.ZHANG					12/17/10			
	CHECKED			PART DESCRIPTION MINI 75 OHM SMB R/A CRIMP PLUG (FOR RG-179DB CABLE)						
	ISSUED									
	SHEET	1 OF 1								
				PART NO. 142176-75						
	CAD FILE	C:/CONNEX/142186-75.DWG		DWG. NO.	142176-75.DWG	REV.	A	SIZE	A	SCALE
DO NOT SCALE DRAWING										

10	HEAT SHRINK TUBING			1
9	FERRULE	COPPER	GOLD	1
8	COVER	BRASS	GOLD	1
7	INSULATOR	PE	NATURAL	1
6	RETAINER RING	BER. COPPER	NATURAL	1
5	CONTACT PIN	BER. COPPER	GOLD	1
4	INSULATOR	PTFE	NATURAL	1
3	BARREL	BRASS	GOLD	1
2	BODY	BRASS	GOLD	1
1	SHELL	BRASS	GOLD	1
	DESCRIPTION	MATERIAL	FINISH	QTY

UNLESS OTHERWISE SPECIFIED DIMENSIONS ARE IN MILLIMETERS. DIMENSIONS IN [] ARE IN INCHES AND FOR CUSTOMER REFERENCE ONLY.	APPROVALS	DATE
UNLESS OTHERWISE SPECIFIED TOLERANCES FOR MILLIMETERS ARE: 0.5 - 8mm ± 0.20mm 8 - 30mm ± 0.40mm 30 - 120mm ± 0.50mm	DRAWN	M.ZHANG
UNLESS OTHERWISE SPECIFIED TOLERANCES FOR INCHES ARE: .020 - .315 = ± 0.007" .315 - 1.180 = ± 0.015" 1.180 - 4.724 = ± 0.020"	CHECKED	
	ISSUED	
	SHEET	1 OF 1
	CAD FILE	C:/CONNEX/142186-75.DWG
DO NOT SCALE DRAWING		

<h1>Amphenol Connex</h1>		
PART DESCRIPTION		
MINI 75 OHM SMB R/A CRIMP PLUG (FOR RG-179DB CABLE)		
PART NO.		
142176-75		
DWG. NO.	142176-75.DWG	REV. A
SIZE	A	SCALE NA

Mouser Electronics

Authorized Distributor

Click to View Pricing, Inventory, Delivery & Lifecycle Information:

[Amphenol:](#)

[142176-75](#)