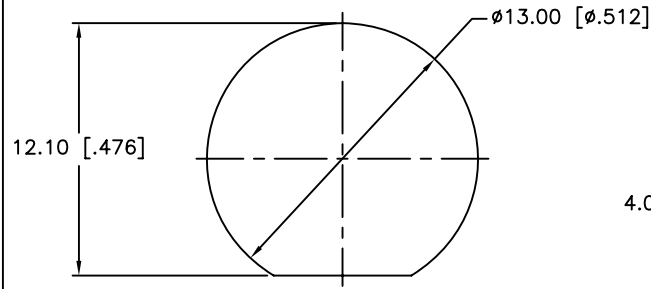
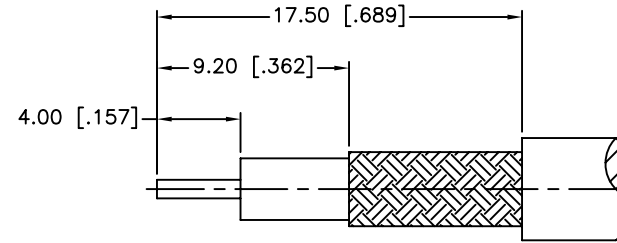


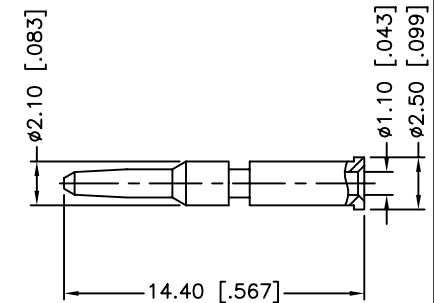
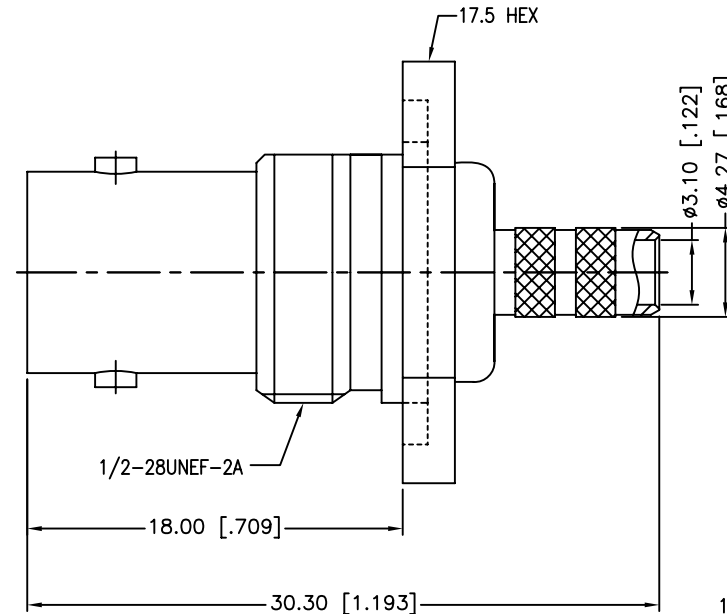
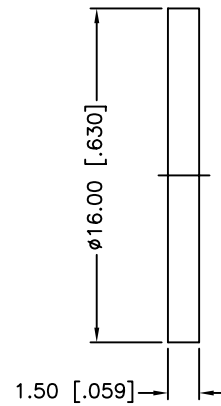
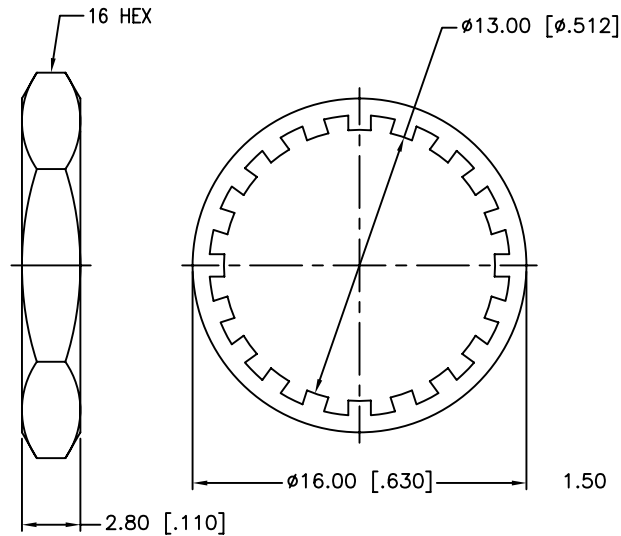
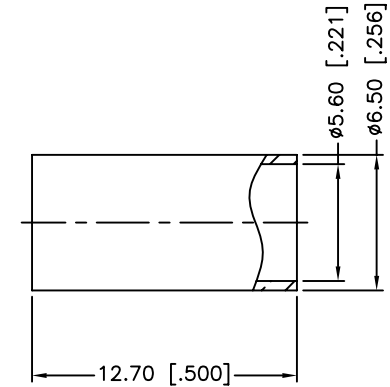
REV.	DATE	ECR NO.	DESCRIPTION
NC	09/23/10	XXXXXX	INITIAL RELEASE



RECOMMENDED  
MOUNTING HOLE



RECOMMENDED  
CABLE STRIPPING DIM'S



1. CRIMPED FERRULE HEX CRIMP SIZE .213"
2. CRIMPED CONTACT PIN HEX CRIMP SIZE .068"
3. MAX. PANEL THICKNESS=3.5mm

9	FERRULE	BRASS	NICKEL	1	UNLESS OTHERWISE SPECIFIED DIMENSIONS ARE IN MILLIMETERS. DIMENSIONS IN [ ] ARE IN INCHES AND FOR CUSTOMER REFERENCE ONLY.  UNLESS OTHERWISE SPECIFIED TOLERANCES FOR MILLIMETERS ARE: 0.5 – 8mm ± 0.20mm 8 – 30mm ± 0.40mm 30 – 120mm ± 0.50mm  UNLESS OTHERWISE SPECIFIED TOLERANCES FOR INCHES ARE: .020 – .315 = ± 0.007" .315 – 1.180 = ± 0.015" 1.180 – 4.724 = ± 0.020"	APPROVALS	DATE	<h1>Amphenol Connex</h1>										
8	CONTACT PIN	BRASS	GOLD	1		DRAWN	M.ZHANG						09/23/10					
7	HEX NUT	BRASS	NICKEL	1		CHECKED												
6	LOCK WASHER	BRASS	NICKEL	1		ISSUED			PART DESCRIPTION									
5	GASKET	RUBBER	RED	1		SHEET	1 OF 1		BNC REVERSE BULKHEAD CRIMP JACK (FOR RG-55/U,142A/U,223/U,400/U CABLE)									
4	BARREL	BRASS	NICKEL	1	PART NO.													
3	INSULATOR	PTFE	NATURAL	1	112505RP													
2	BODY	BRASS	NICKEL	1	DO NOT SCALE DRAWING	CAD FILE	C:/CONNEX/112505RP.DWG	DWG. NO.		112505RP.DWG	REV.	B	SIZE	A	SCALE	NA		
1	HOUSING	BRASS	NICKEL	1														
DESCRIPTION		MATERIAL	FINISH	QTY														

# Mouser Electronics

Authorized Distributor

Click to View Pricing, Inventory, Delivery & Lifecycle Information:

[Amphenol:](#)

[112505RP](#)